

S.W. 1/4
SECTION 17, T.7N., R.1W., S.L.B. & M.

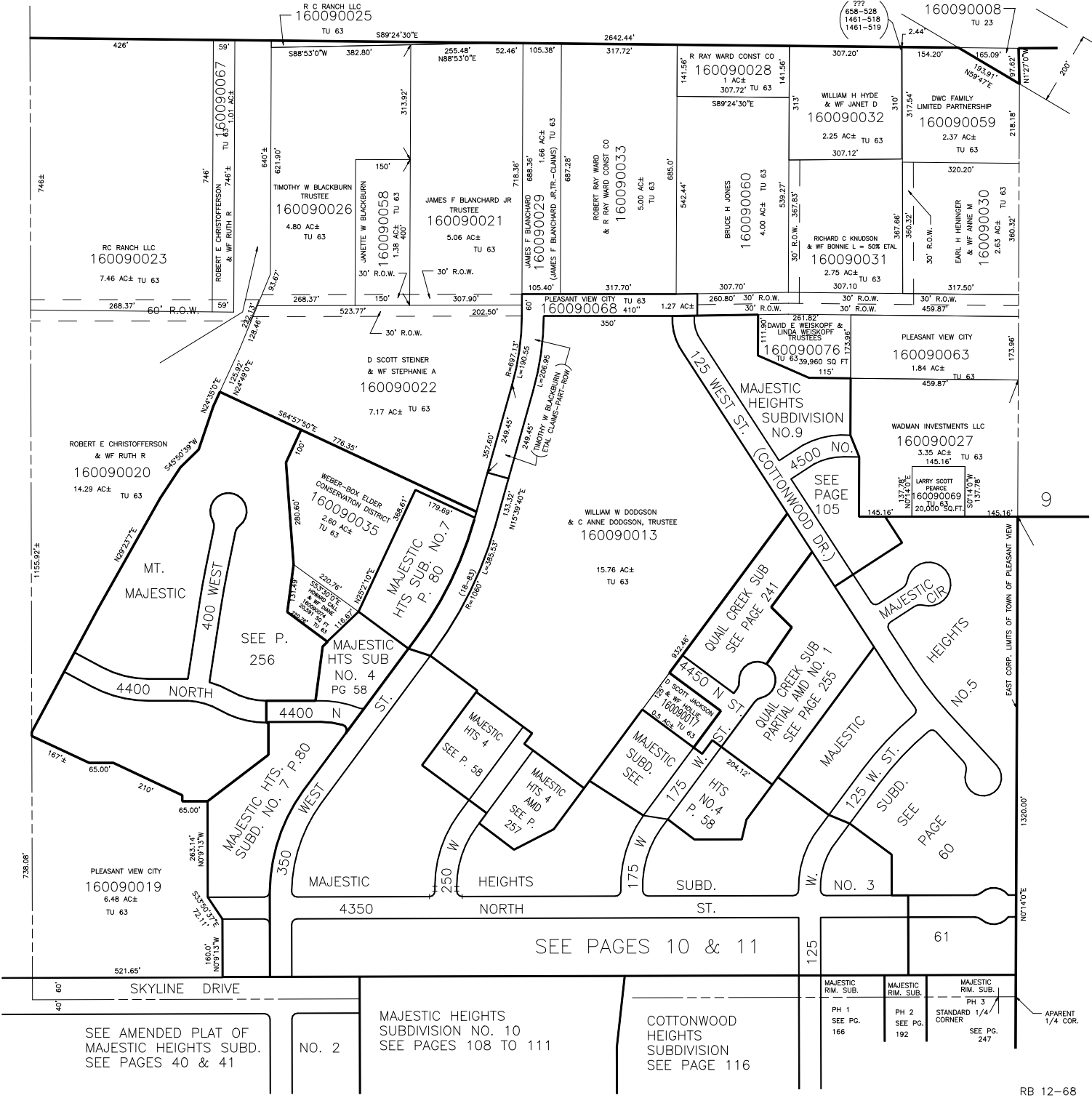
IN WEBER COUNTY AND PLEASANT VIEW CITY

TAXING UNIT: 23,63

SCALE 1" = 200'

UTAH POWER & LIGHT CO
160090008
TU 23

777
658-528
1461-518
1461-519



SEE P 12

16

SEE AMENDED PLAT OF MAJESTIC HEIGHTS SUBD. SEE PAGES 40 & 41

NO. 2

MAJESTIC HEIGHTS SUBDIVISION NO. 10 SEE PAGES 108 TO 111

COTTONWOOD HEIGHTS SUBDIVISION SEE PAGE 116

MAJESTIC RIM. SUB. PH 1 SEE PG. 166

MAJESTIC RIM. SUB. PH 2 SEE PG. 192

MAJESTIC RIM. SUB. PH 3 STANDARD 1/4 CORNER SEE PG. 247

APARENT 1/4 COR.